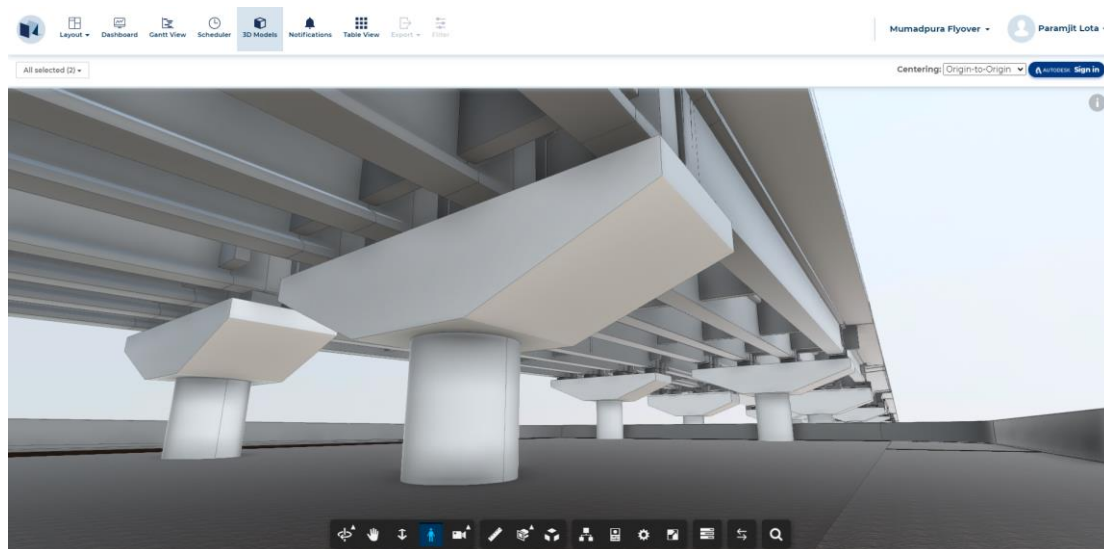


# BIM-based PMC driving state of the art Infrastructure Development – A Case Study



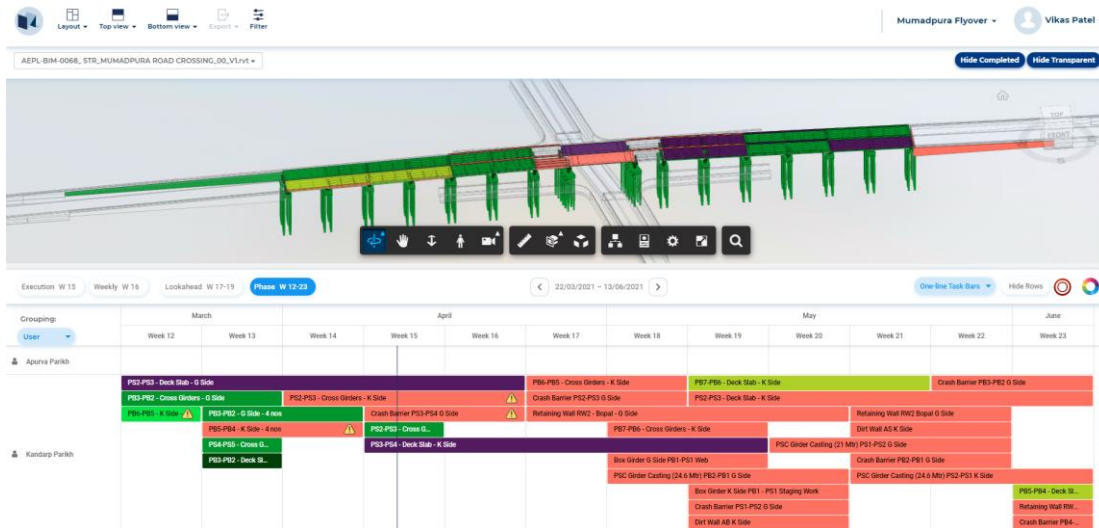
## Case Overview – Multimedia – Mumadpura Flyover

Multimedia group, one of the more renowned names in the PMC domain in the state of Gujarat, is working on numerous government infrastructure projects across the country. On one such project with Ranjit Buildcon as the general contractor, Multimedia is transitioning towards a BIM-based PMC approach for a Flyover/Bridge Project for the Ahmedabad Urban Development Authority (AUDA).



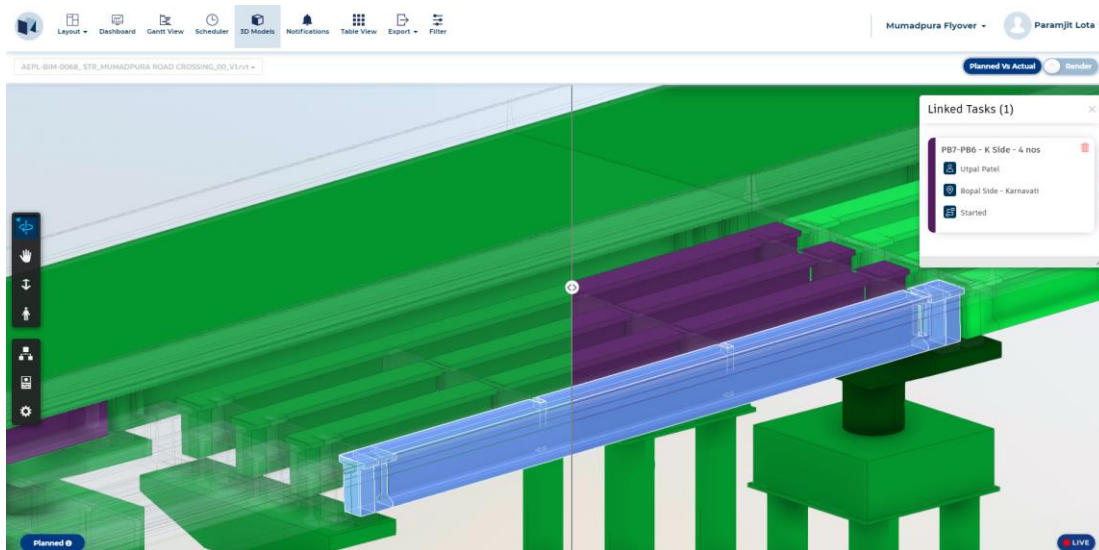
### VisiLean – Lean-BIM Integrated Live 4D

With the BIM model elements linked to the execution tasks, any update from site is visualised directly on the model. This generates an accurate and LIVE 4D representation of the progress on-site. The supervisors update their work status directly from the site using the VisiLean Mobile App - LiveSite. This has enabled live monitoring and immense convenience for sharing notes and images of the work being executed.



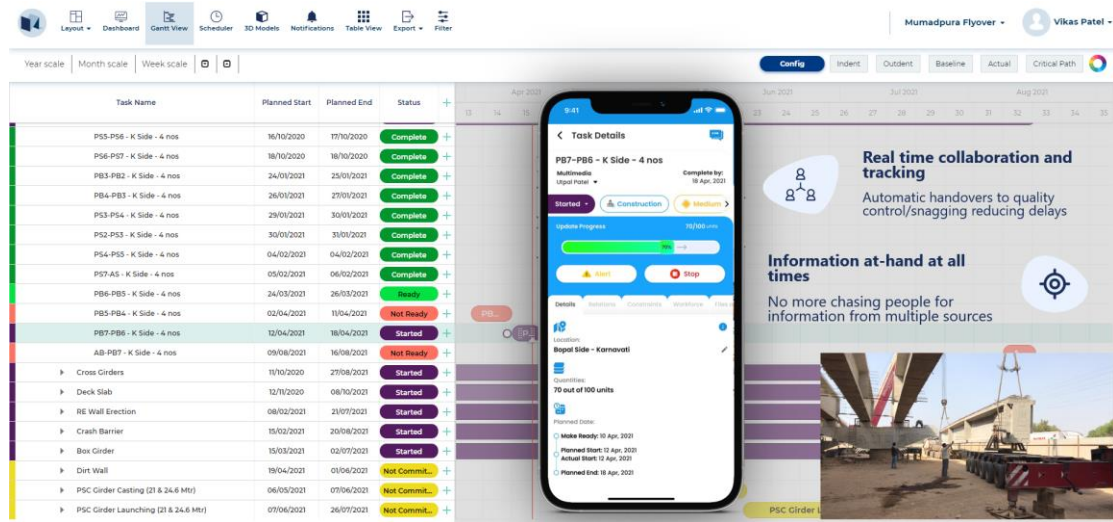
### Live Review of Planned vs Actual

With the model linking setup, not only is the team able to visualise the status of works and their planned activities on the model, but the Project Managers also get to review the Planned vs Actual status with immense ease – a slider! Yes, with VisiLean, you can review your planning against the actual status of works on site, directly on the linked BIM elements.



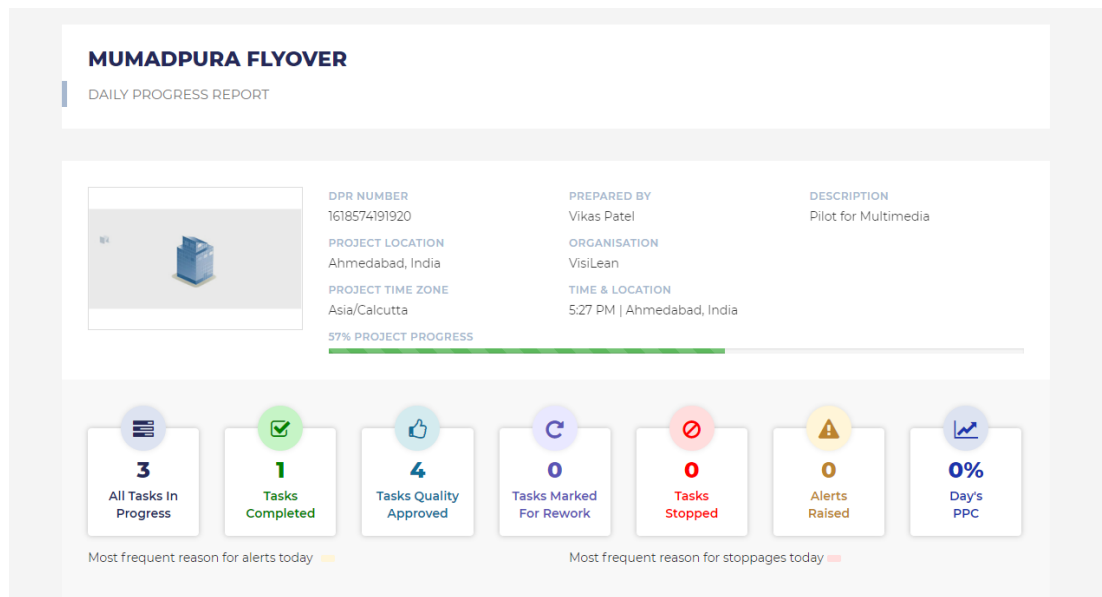
### Project progress with task details and photos from site

With VisiLean enabling real-time updates from site, the team is able to release weekly and monthly progress reports at the click-of-a-button to update the relevant stakeholders. These reports contain progress updates, visualisation of project status on the BIM model, as well as site images for accurate correlation.



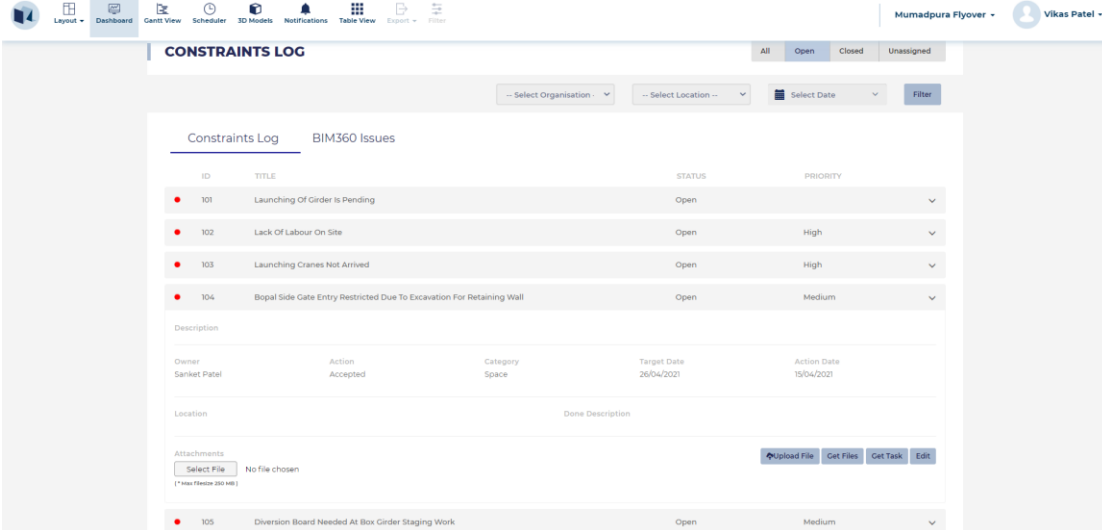
### Auto-generated Daily Progress Reports (DPR)

This auto-generation of Daily Progress Reports (DPR) with data captured seamlessly from site has reduced a significant number of wasteful man-hours. With the added advantage of having accurate visualisation of site progress, VisiLean has rid information latency from the entire process.



## Issues Monitoring

With the convenience of mobility, the team can report on Constraints directly from the App. This allows for efficient information updates from site on any potential issues or challenges that the team is facing for the relevant stakeholders to take action and provide resolution.



The screenshot displays the 'CONSTRAINTS LOG' interface. At the top, there is a navigation bar with icons for Layout, Dashboard, Cam View, Scheduler, 3D Models, Notifications, Table View, Export, and Print. The user is logged in as 'Mumadpura Flyover' and 'Vikas Patel'. The main content area shows a table of constraints with the following data:

ID	TITLE	STATUS	PRIORITY
101	Launching Of Girder Is Pending	Open	Medium
102	Lack Of Labour On Site	Open	High
103	Launching Cranes Not Arrived	Open	High
104	Bopal Side Gate Entry Restricted Due To Excavation For Retaining Wall	Open	Medium

Below the table, there is a 'Description' section with fields for Owner (Sanket Patel), Action (Accepted), Category (Space), Target Date (26/04/2021), and Action Date (15/04/2021). There are also fields for Location and Done Description. An 'Attachments' section shows a 'Select File' button and 'No file chosen' message. At the bottom, another constraint entry is visible:

105	Diversion Board Needed At Box Girder Staging Work	Open	Medium
-----	---	------	--------